



3-075 Rod Latch FS PrB



Avantages

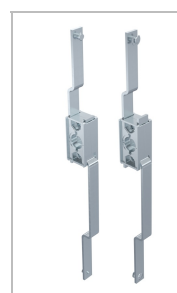
- For cutout B.
- For application within the sealed area.
- The latch can be combined with escutcheons or swinghandles.
- RH / LH application through double symmetry.
- Grounding by grounding clip (optional).

Materials

- **Housing:** zinc die, untreated
- **Pinion:** sintered metal
- **Rods:** steel, zinc plated

Notes

1. stroke 24mm
2. length L
3. clearance

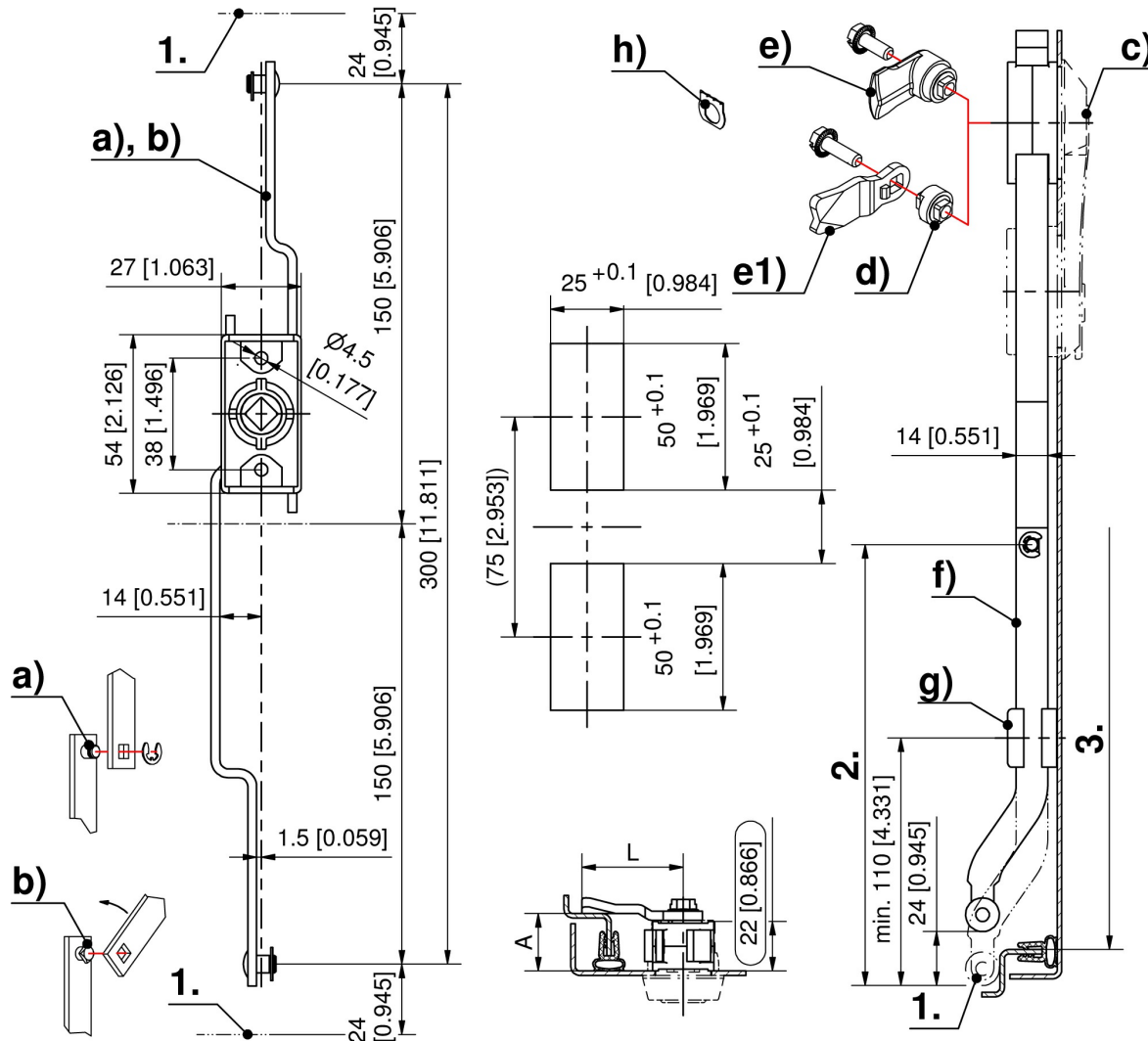


Rod latch

	Part Number	Rod fastening	Installation type	Delivery Unit
a)	208-9021.00-00000	C-clip	screw-on	1 pc.
b)	208-9022.00-00000	quick-fit	screw-on	1 pc.

* Accessories

- c) 3-070 **Swinghandle FS PrB**
- c) 3-101 **Escutcheons and Inserts**
- c) 3-135 **Escutcheon for Rod Latch PrA**
- c) 3-136 **Cutout-Cover PrA / PrB / PrC**
- d) 3-163 **Cam Adapter Zinc Die**
- e) 208-9401.00-00000 **Cam with square, A25, L30 with serrated screw M6x16**
208-9402.00-00000 **Cam with square, A20, L40 with serrated screw M6x16**
- e) 208-9403.00-00000 **Cam adapter with serrated screw M6x20**
- e) 208-9404.00-00000 **Cam with square, A18, L40 with serrated screw M6x16**
- e) 208-9408.00-00000 **Cam with square, A30, L30 with serrated screw M6x16**
- e1) 1-102 **Cams L35/45 Steel**
- f) 3-160 **Flat Rod FS with Rollers**
- g) 3-910 **Rod Guide FS 23mm**
- g) 3-911 **Rod Guide FS 23mm**
- h) 3-011 **Grounding Clip Stainless Steel**



Formula for rods:
cutout in the door center

$$L_2 = \frac{\text{clearance 3. - 10mm [0.394] (tolerance) - Rod Latch System in retraced condition 300mm [11.811]}}{2}$$