



4-270 Hinge 60x60 Pr01 180°



Avantages

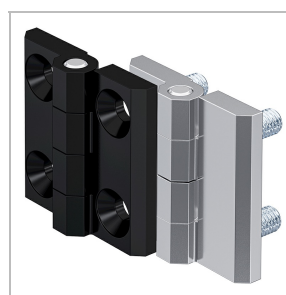
- Screw-on hinge with or without grounding.
- For nested doors.
- Hinge visible.
- RH / LH application.
- 180° Opening angle.

Materials

- **Hinge halves:** zinc die, blasted chrome plated or black
- **Pin:** stainless steel or steel, zinc plated
- **Molded in screws and grounding washer:** steel, zinc plated
- **Spring:** spring steel

Notes

*Grounding version c): limited current carrying capacity, 4 grounding washers required (not included in the scope of delivery).
Combination of versions a) and b) on request.
1. contact spring



Hinge, zinc die

	Part Number	Version	Surface	Material pin	Pin version	Installation type	Delivery Unit
a)	218-9203.00-00000	with countersunk holes for M8	blasted chrome plated	stainless steel	pressed in	screw-on	10 pcs.
a)	218-9204.00-00000	with countersunk holes for M8	black	stainless steel	pressed in	screw-on	10 pcs.
b)	218-9201.00-00000	Screws M8 molded in	blasted chrome plated	stainless steel	pressed in	screw-on	10 pcs.
b)	218-9202.00-00000	Screws M8 molded in	black	stainless steel	pressed in	screw-on	10 pcs.
c)	218-9422.00-00000	Screws M8 molded in	black	steel, zinc plated	pressed in	screw-on	10 pcs.



d) 861-0146.07-00008 **Grounding washer**

