



7-071 Compression Latch Pr22.1 with Spring-Loaded Flap



Avantages

- The flap is standing upright (90°) in unlocked position and closes, when compression latch is closed securely.
- The flap indicates locking position and protects against dust and water.
- Compression 6 mm.
- Seismic-proof according to GR-63-CORE, Issue 4.
- Fire protection tested with E60 classification according to DIN EN 45545-3.
- Vibration-proof according to DIN EN 61373.
- IP65/IP67 according to DIN EN 60529.
- RH and LH version.
- Grounding by grounding nut.
- Version b): secured against unintended opening at low pressure or high-speed.
- Flat external seal (1.) damps the flap.
- Circumferential handle bar allows easy handling also with work- or safety gloves.

Materials

- **Housing, flap, insert, grounding nut:** AISI 316
- **Screw, nut and spring:** stainless steel
- **O-ring:** NBR

Notes

(S) Door-thickness max. 8mm
On request available with reflecting sticker on the inside.
Please configure the quarter-turn with insert and cam.
1. flat external seal



Compression Latch with insert, version RH, closing left

	Part Number	Insert	Installation type	Delivery Unit
a)	248-9603.00-00001	Double bit 3mm pin	screw-on	1 pc.
a)	248-9603.00-00002	Double bit 5mm pin	screw-on	1 pc.
a)	248-9603.00-00003	Square 8mm	screw-on	1 pc.
a)	248-9603.00-00004	Triangular 8mm	screw-on	1 pc.
a)	248-9603.00-00005	Conical square 9mm	screw-on	1 pc.

Compression Latch with insert, version LH, closing right

	Part Number	Insert	Installation type	Delivery Unit
a)	248-9652.00-00001	Double bit 3mm pin	screw-on	1 pc.
a)	248-9652.00-00002	Double bit 5mm pin	screw-on	1 pc.
a)	248-9652.00-00003	Square 8mm	screw-on	1 pc.
a)	248-9652.00-00004	Triangular 8mm	screw-on	1 pc.
a)	248-9652.00-00005	Conical square 9mm	screw-on	1 pc.

Compression Latch with insert, version RH, closing left, spring secured

	Part Number	Insert	Installation type	Delivery Unit
b)	248-9604.00-00001	Double bit 3mm pin	screw-on	1 pc.
b)	248-9604.00-00002	Double bit 5mm pin	screw-on	1 pc.
b)	248-9604.00-00003	Square 8mm	screw-on	1 pc.
b)	248-9604.00-00004	Triangular 8mm	screw-on	1 pc.
b)	248-9604.00-00005	Conical square 9mm	screw-on	1 pc.

Compression Latch with insert, version LH, closing right, spring secured

	Part Number	Insert	Installation type	Delivery Unit
b)	248-9653.00-00001	Double bit 3mm pin	screw-on	1 pc.
b)	248-9653.00-00002	Double bit 5mm pin	screw-on	1 pc.
b)	248-9653.00-00003	Square 8mm	screw-on	1 pc.
b)	248-9653.00-00004	Triangular 8mm	screw-on	1 pc.
b)	248-9653.00-00005	Conical square 9mm	screw-on	1 pc.

Specific

* accessories

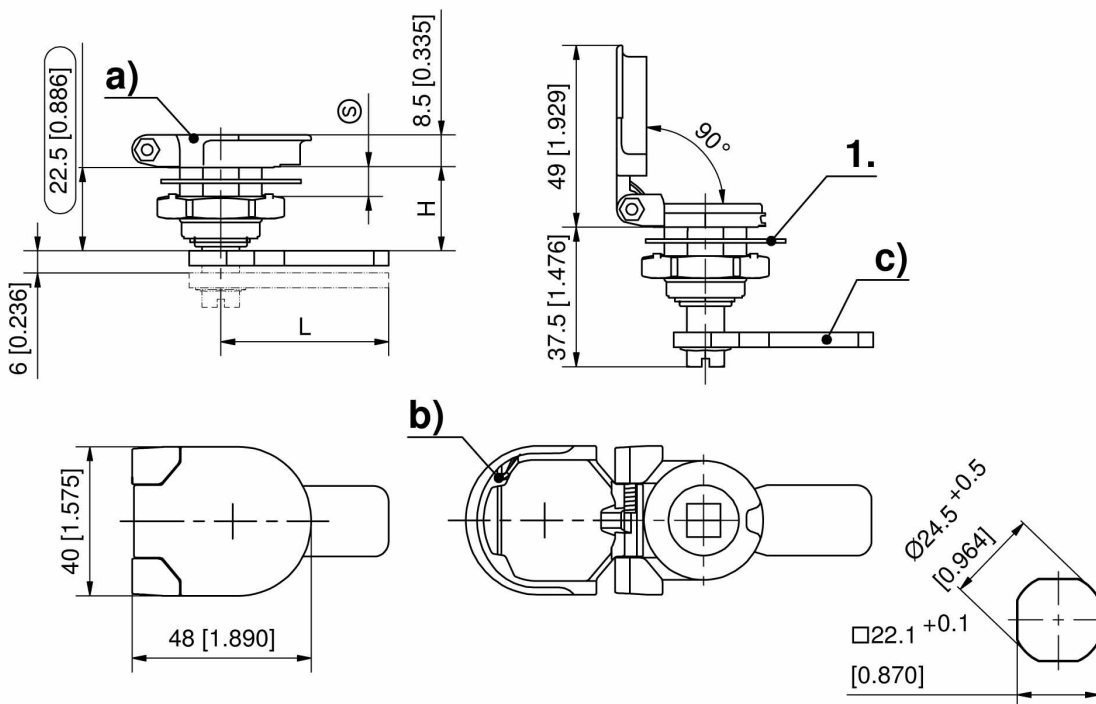
- 1.) 200-0916.00-00000 **Flat external seal for PS 7-071**

Assembly options

200-0001.00-00000 **Assembling cam without o-ring**

* Accessories

- c) 7-105.01 **Cams L35/45 Stainless Steel**
- 6-100 **Wrenches and Keys**
- 6-101 **Universal key**
- 6-105 **Keys for the Railway Sector**





7-105.01 Cams L35/45 Stainless Steel



Avantages

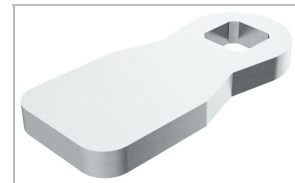
- Cams without ramp and stop.
- **a), a1)** = straight cam (XX)
- (XX) = housing length, measured from the upper edge of the panel to the upper edge of the cam.
- **b), b1)** = negatively bent cam (upwards)
- **c), c1)** = positively bent cam (downwards)

Materials

- **Cams:** AISI 304

Notes

Attention: please note that a collision with the fixing nut of negatively bent cams installed in thick doors might be possible. The functionality has to be checked in the individual case.
Formula for H-dimension:
for negatively bent cams K will be subtracted from (XX),
for positively bent cams K will be added to (XX)



Cam, length 35mm, without stop

Part Number	b) negatively bent K =	c) positively bent K =	Delivery Unit
100-0535.80-00022	22 mm	22 mm	1 pc.
100-0535.80-00020	20 mm	20 mm	1 pc.
100-0535.80-00018	18 mm	18 mm	1 pc.
100-0535.80-00016	16 mm	16 mm	1 pc.
100-0535.80-00014	14 mm	14 mm	1 pc.
100-0535.80-00012	12 mm	12 mm	1 pc.
100-0535.80-00010	10 mm	10 mm	1 pc.
100-0535.80-00008	8 mm	8 mm	1 pc.
100-0535.80-00006	6 mm	6 mm	1 pc.
100-0535.80-00004	4 mm	4 mm	1 pc.
100-0535.80-00002	2 mm	2 mm	1 pc.
a) 100-0535.80-00000	00 mm	00 mm	1 pc.

Cam, length 45mm, without stop

Part Number	b) negatively bent K =	c) positively bent K =	Delivery Unit
100-0545.80-00022	22 mm	22 mm	1 pc.
100-0545.80-00020	20 mm	20 mm	1 pc.
100-0545.80-00018	18 mm	18 mm	1 pc.
100-0545.80-00016	16 mm	16 mm	1 pc.
100-0545.80-00014	14 mm	14 mm	1 pc.
100-0545.80-00012	12 mm	12 mm	1 pc.
100-0545.80-00010	10 mm	10 mm	1 pc.
100-0545.80-00008	8 mm	8 mm	1 pc.
100-0545.80-00006	6 mm	6 mm	1 pc.
100-0545.80-00004	4 mm	4 mm	1 pc.
100-0545.80-00002	2 mm	2 mm	1 pc.
a1) 100-0545.80-00000	00 mm	00 mm	1 pc.

