



# 1-079 Compression Latch Pr20.1 L32 with H-Dimension Adjustment



## Avantages

- Compression 6mm.
- Flat head shape.
- The coloured marking on the casing top indicates the opened/closed position in form of a padlock.
- Inserts with coloured marking.
- Vibration-proof.
- IP65/67 according to DIN EN 60529 and IP69K according to DIN 40050.
- RH and LH version.
- Grounding by single-sided grounding nut.
- The H-dimension 17 - 73mm can be varied via the cranking of the cams.
- The cam can be varied via H-dimension adjustment on the threaded square rod.

## Materials

- **Housing, insert:** zinc die, chrome plated glossy or black matte e-coated
- **Threaded square rod, nut:** steel, zinc plated
- **Grounding nut:** zinc die, untreated
- **Catch:** PA
- **Knurled wheel:** zinc die

## Notes

(S) Door-thickness max. 22mm  
Please configure the quarter-turn with insert and cam.  
1. compression 6mm  
2. foamed sealing PUR  
d) catch with h-dimension adjustment  
Variant where the cam can be variably adjusted with nuts, see website 1-079.01.




## Compression Latch with insert, version RH, closing left

	<b>Part Number</b>	<b>Surface</b>	<b>Insert</b>	<b>Installation type</b>	<b>Delivery Unit</b>
a)	248-9802.11-11201	chrome plated	Square 8mm	screw-on	1 pc.
a)	248-9802.13-11201	black	Square 8mm	screw-on	1 pc.
a)	248-9803.11-11201	chrome plated	Double bit 3mm pin	screw-on	1 pc.
a)	248-9804.11-11201	chrome plated	Double bit 5mm pin	screw-on	1 pc.
a)	248-9807.11-11201	chrome plated	Triangular 8mm	screw-on	1 pc.
a)	248-9808.11-11201	chrome plated	Conical square 9mm	screw-on	1 pc.
a)	248-9808.13-11201	black	Conical square 9mm	screw-on	1 pc.


## Compression Latch with insert, version LH, closing right

	<b>Part Number</b>	<b>Surface</b>	<b>Insert</b>	<b>Installation type</b>	<b>Delivery Unit</b>
b)	248-9802.11-12201	chrome plated	Square 8mm	screw-on	1 pc.
b)	248-9802.13-12201	black	Square 8mm	screw-on	1 pc.
b)	248-9803.11-12201	chrome plated	Double bit 3mm pin	screw-on	1 pc.
b)	248-9804.11-12201	chrome plated	Double bit 5mm pin	screw-on	1 pc.
b)	248-9807.11-12201	chrome plated	Triangular 8mm	screw-on	1 pc.
b)	248-9808.11-12201	chrome plated	Conical square 9mm	screw-on	1 pc.
b)	248-9808.13-12201	black	Conical square 9mm	screw-on	1 pc.

 Assembly options

200-0020.00-00000 **Assembling cam, LH door**

200-0021.00-00000 **Assembling cam, RH door**

 Accessories

c) 1-102.01 **Cams L45 Steel**

6-100 **Wrenches and Keys**

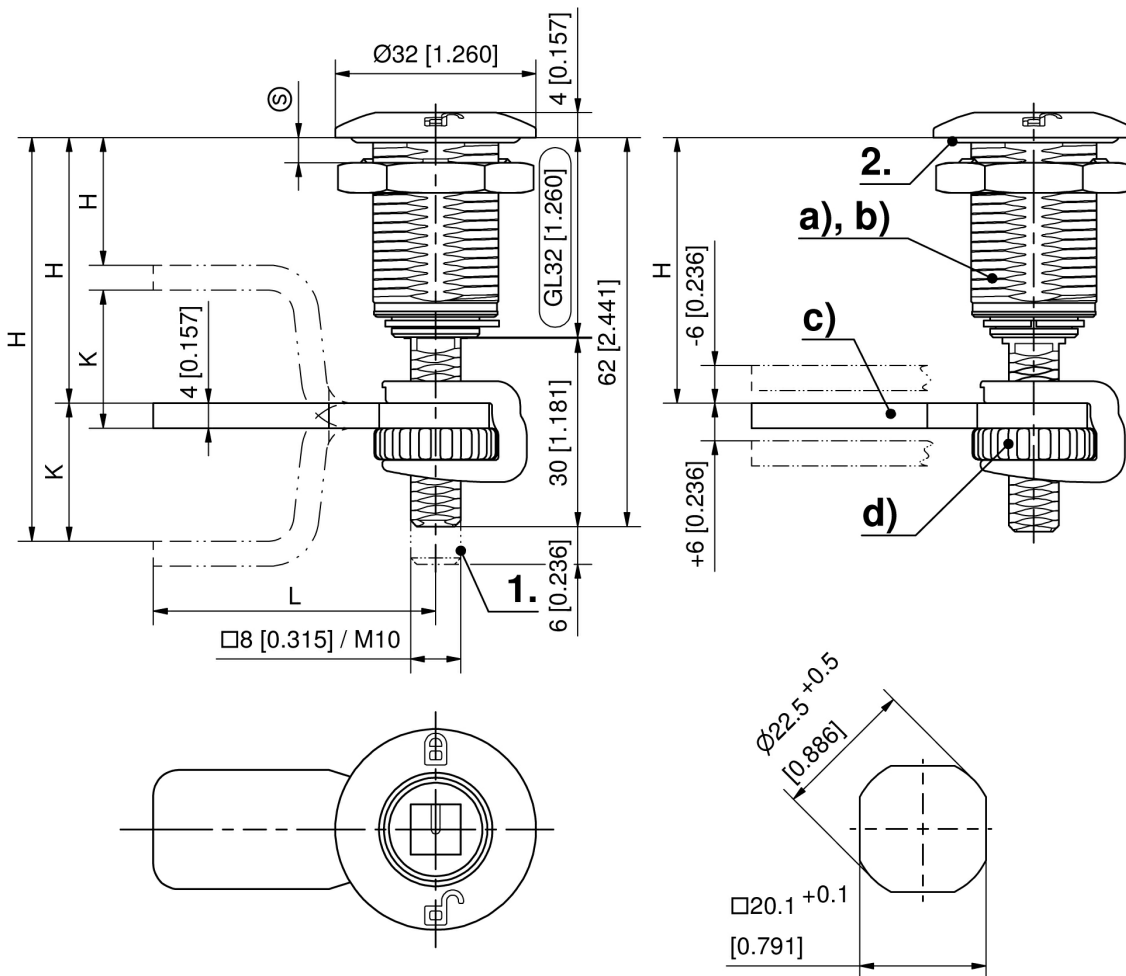
6-101 **Universal key**

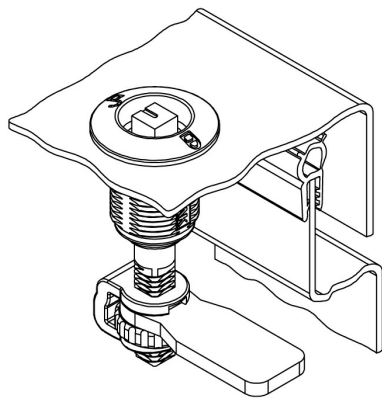
6-105 **Keys for the Railway Sector**

200-4103.00-00000 **Dust cap**

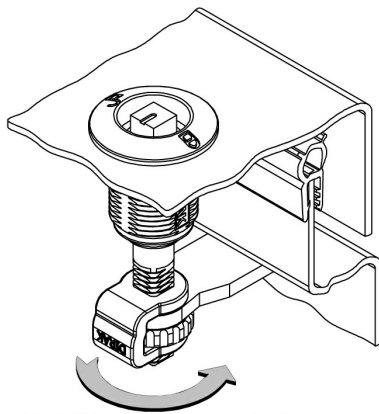
200-4601.00-00000 **Anti-rotation device**

200-4601.02-00000 **Anti-rotation device**

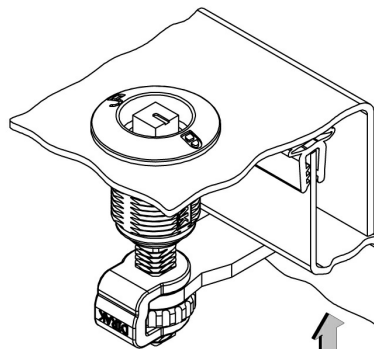




open, unlatched position



First 90° rotation: the cam latches behind the frame into the locked position. The door cannot be opened.



A further 90° rotation will pull the already latched cam towards the frame around 6mm [0.236]; the seal is compressed, the door is latched and free of play.



# 1-102.01 Cams L45 Steel



## Avantages

- Cams without ramp and stop.
- **a** = straight cam (XX)
- **(XX)** = housing length, measured from the upper edge of the panel to the upper edge of the cam.
- **b** = negatively bent cam (upwards).
- **c** = positively bent cam (downwards).

## Materials

- **Cams:** steel, zinc plated

## Notes

Attention: please note that a collision with the fixing nut of negatively bent cams installed in thick doors might be possible. The functionality has to be checked in the individual case.  
Formula for H-dimension:  
for negatively bent cams K will be subtracted from (XX),  
for positively bent cams K will be added to (XX).



## Cam, length 45mm, without stop

<b>Part Number</b>	<b>b) negatively bent K =</b>	<b>c) positively bent K =</b>	<b>Delivery Unit</b>
100-0545.15-00022	22 mm	22 mm	1 pc.
100-0545.15-00020	20 mm	20 mm	1 pc.
100-0545.15-00018	18 mm	18 mm	1 pc.
100-0545.15-00016	16 mm	16 mm	1 pc.
100-0545.15-00014	14 mm	14 mm	1 pc.
100-0545.15-00012	12 mm	12 mm	1 pc.
100-0545.15-00010	10 mm	10 mm	1 pc.
100-0545.15-00008	8 mm	8 mm	1 pc.
100-0545.15-00006	6 mm	6 mm	1 pc.
100-0545.15-00004	4 mm	4 mm	1 pc.
100-0545.15-00002	2 mm	2 mm	1 pc.
a) 100-0545.15-00000	00 mm	00 mm	1 pc.

