



2-103 Swinghandle Zinc Die RS 105 for PHZ, RC2



Avantages

- Spring loaded, leap up handle.
- 90° Closing rotation.
- For profile-cylinders with length of 40 and 45mm.
- Cylinder cover magnetically secured.
- Protected against unauthorized access by a bolt.
- Tested according to security class RC2 DIN EN 1630. Only in combination with profile cylinders according to DIN 18252.
- Seismic-proof according to GR-63-CORE, Issue 4.
- Vibration-proof according to DIN EN 61373.
- IP65 according to DIN EN 60529.
- RH / LH application.

Materials

- **Swinghandle, dish, dust cover and cap:** zinc die, black

Notes

- (S) Door-thickness max. 3mm
1. stroke 18mm
2. clearance
To use the same door both RH and LH, 2 holes $\square 46$, symmetrical to door center are possible.

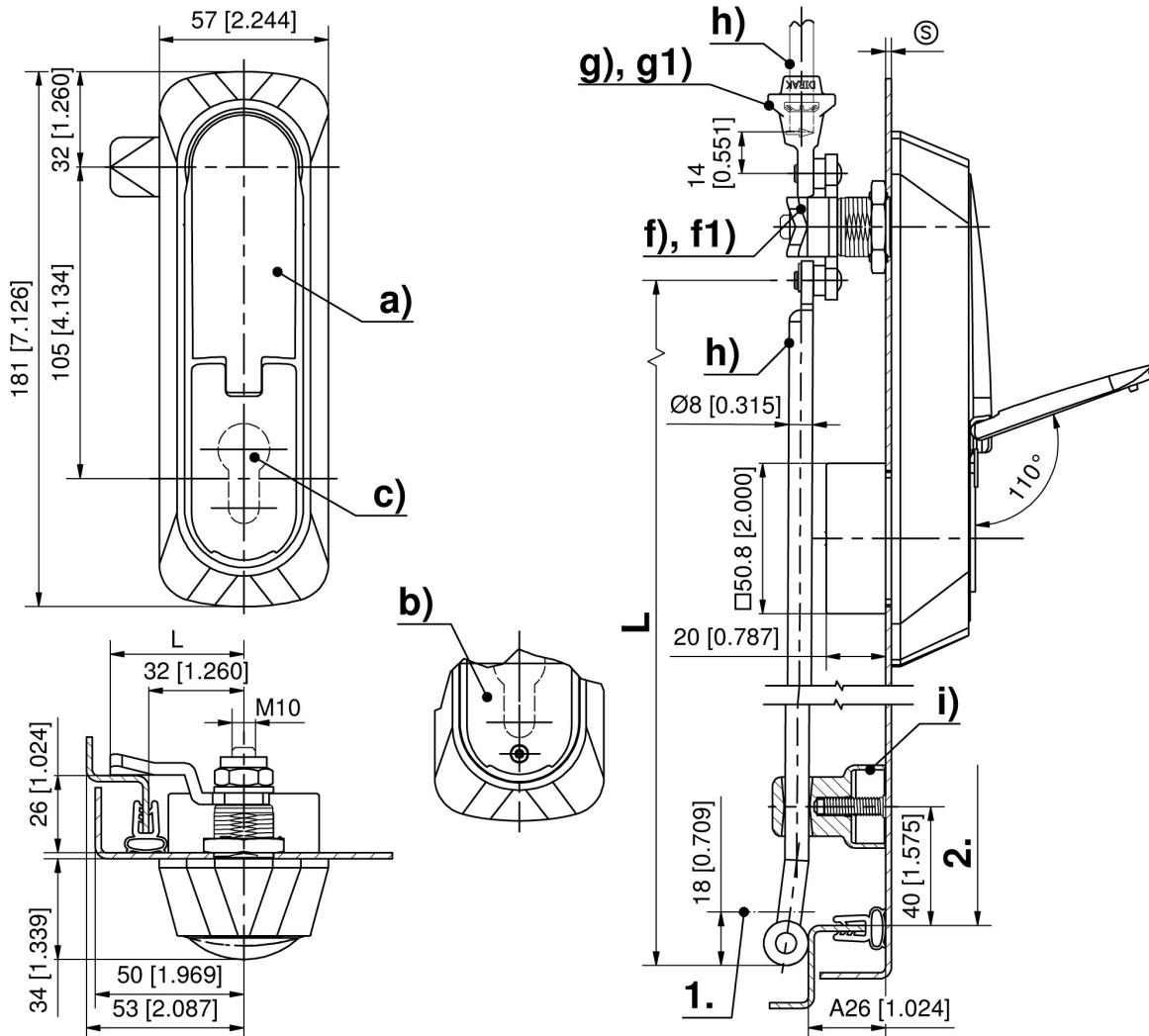


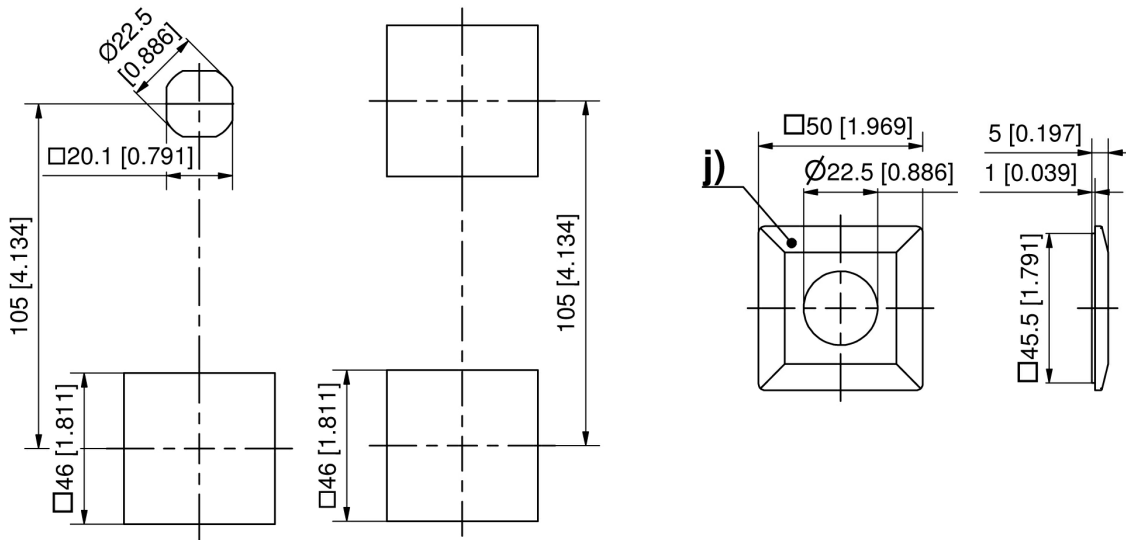
Swinghandle

	Part Number	Internal cover	Cylinder cover material	Installation type	Delivery Unit
a)	207-9130.00-00000	$\square 46$	zinc die	screw-on	1 pc.
b)	207-9131.00-00000	$\square 46$	zinc die screwable	screw-on	1 pc.

* Accessories

- c) 211-9003.00-00000 **DIRAK Profile-cylinder**
- c) 211-9004.00-00000 **DIRAK Profile-cylinder**
- f) 2-150 **3-Point Cam L45, Rod Control**
- f1) 207-9595.00-00000 **Adapter for 3-point cam**
- f1) 207-9596.00-00000 **Adapter for 3-point cam**
- g) 1-181 **Adapter for Round Rods Ø8mm PA**
- g) 1-181.01 **Adapter for Round Rods Ø8mm / Ø10mm Zinc Die**
- h) 1-170 **Round Rods with Eye**
- h) 1-180 **Round Rods for Adapter**
- i) 1-191 **Height-adjustable Rod Guide RS**
- i) 1-190 **Rod Guides RS**
- i) 1-193 **Rod Guide RS**
- i) 1-192 **Rod Guides RS**
- j) 602-0016.35-00000 **Square adapter**
- j) 207-2803.00-00000 **Gasket for adapter □46mm**



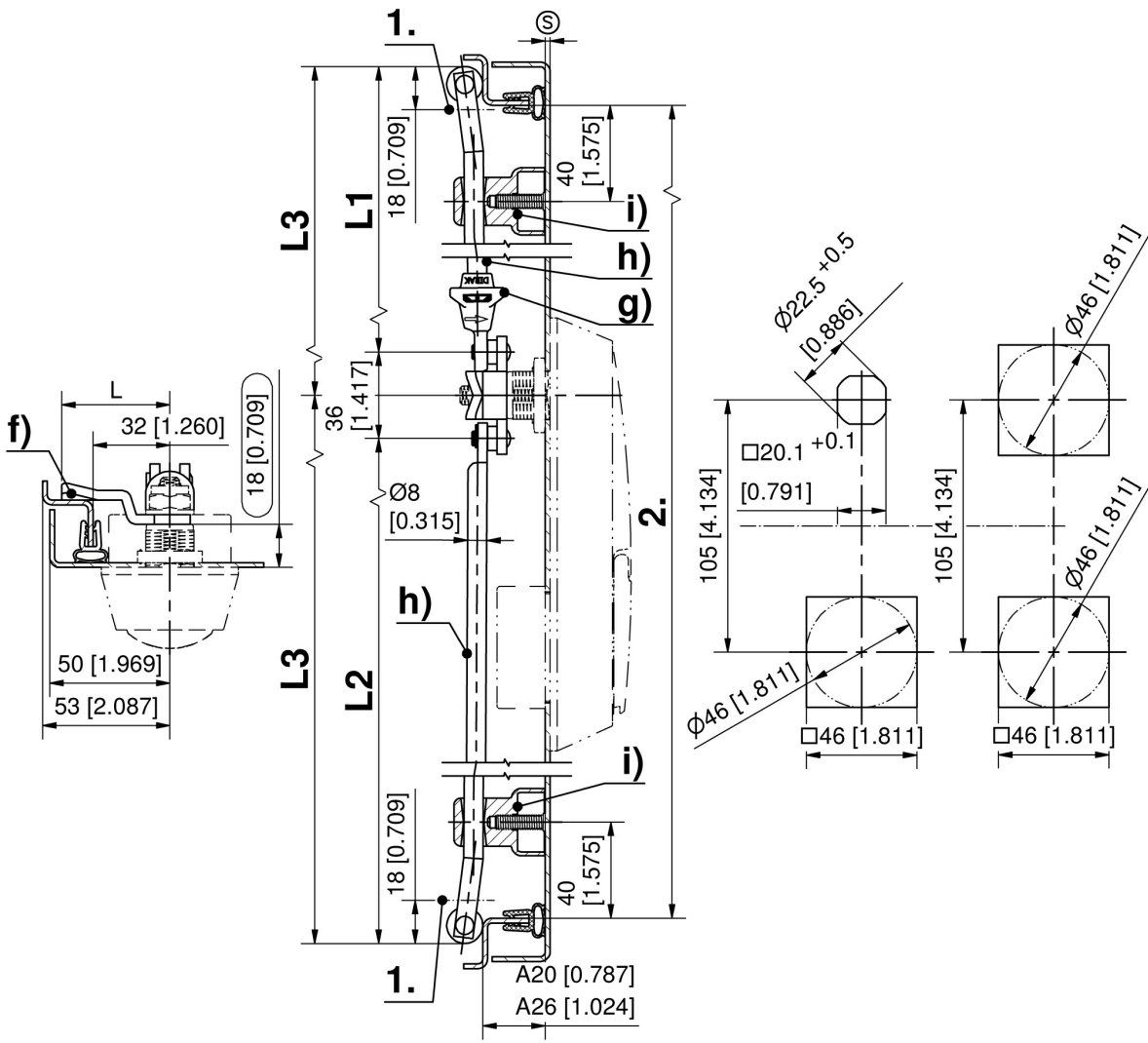


Formula for rods with eye and rollers:
cutout in the door center (rod length varies)

$$L_1 = \frac{\text{upper rod}}{2} = \frac{2 \cdot \text{clearance} - 12 \text{ mm} [0.472]}{2 [0.079]} - 53 \text{ mm} [2.087] \quad L_2 = \frac{\text{lower rod}}{2} = \frac{2 \cdot \text{clearance} - 12 \text{ mm} [0.472]}{2 [0.079]} + 53 \text{ mm} [2.087]$$

cutout outside the door center (rod length equal)

$$L_3 = \frac{2 \cdot \text{clearance} - 12 \text{ mm} [0.472]}{2 [0.079]}$$





Gutachtliche Stellungnahme/ Expert`s report Nr. 45-87/18.221

Grundlagen/ Fundamentals

DIN EN 1630:2011-09, RC 2
Prüfbericht/ Test report 45-121/14

Auftraggeber/ Applicant

DIRAK GmbH
Königsfelder Straße 1
D-58256 Ennepetal

Produkt/ Product

Schwenkhebel/ Swinghandle 105

In Erweiterung der o.g. Grundlagen werden
folgende Komponenten/Varianten/ In extension of the
above mentioned fundamentals, the following
components/variants

Produktvarianten/ Product variants
(Schwenkhebel/ Swinghandle MLE1102 RI, MLE1102 SI,
MLE1102 EM, 105 / 105 verschraubbar/ screwable und/ and 130)

zugelassen. Vorausgesetzt wird die sonstige
Baugleichheit des einbruchhemmenden Elements./
will be approved. The otherwise identical construction of the
burglar-resistance elements is a prerequisite

Bauart/ Type
(modifizierter Schwenkgriff/ modified swinghandle)

Datum des Gutachtens/ Date of expert`s report

25. März/ March 2021


Umfang des Gutachtens/ Volume of expert`s report

1 Seite Deckblatt/ Page cover,
1 Seite Gutachten/ Page expert`s report,
7 Seiten Anlagen/ Pages attachment

Zusatzbedingungen zu diesem Gutachten/
Additional conditions regarding this expert`s report

Die gutachtliche Stellungnahme hat solange Gültig-
keit, wie sich die angegebene Prüfungsgrundlage
und/oder das geprüfte Produkt nicht ändern.
Sie darf nicht verändert und nur als Ganzes
veröffentlicht werden./ The expert`s report is valid as long
as the testing-base and/or the tested products does not change.
It is not allowed to modify or partially publish the expert`s report.

Unterschrift/ Signature


Sascha Holz, Staatl. gepr. Techniker/
State-Certified Technical Engineer
Laborleitung/ Laboratory Management




Olaf Lechte
Prüfer/ Verifier

Diese gutachtliche Stellungnahme ersetzt die gutachtliche Stellungnahme 45-87/18.121 vom
08.03.2021./ This expert`s report replaces the expert`s report 45-87/18.121 from 08.03.2021.



Technische Bewertung/ Technical assessment

Zusätzlich zu dem in dem Prüfbericht 45-121/14 beschriebenen Produkt werden folgende Bauarten und Abweichungen gutachtlich freigegeben:/ In addition to the product described in the test report 45-121/14, the following design types and variations are approved by the expert`s report:

Produktvarianten/ Product variants

Gegenüber dem geprüften Schwenkhebel 105 werden auch die Schwenkhebel mit der Bezeichnung MLE1102 RI, MLE1102 SI (mit Befestigungsset für die Steuerleitung und Abdeckplatte aus Zink-Druckguss), MLE1102 EM (mit einem Stichmaß von 130 mm), 105 und 105 verschraubbar entsprechend Anlage 1 bis Anlage 5 freigegeben. Auf Basis der festgestellten Ergebnisse der Prüfungen und nach Überprüfung der Unterlagen kann davon ausgegangen werden, dass die unterschiedlichen Produktvarianten keinen negativen Einfluss auf den manuellen Werkzeugangriff haben. / The swinghandles labeled MLE1102 RI, MLE1102 SI (with mounting set for the control cable and cover of zinc die-cast), MLE1102 EM (with a center distance of 130 mm), 105 and 105 screwable in accordance with attachment 1 to attachment 5 are permitted compared to the tested swinghandle 105. On the basis of the established results of the tests and after checking the documents, it can be assumed that the different product variants have no negative influence on the manual tool attack.

Bauarten/ Types

Gegenüber den geprüften und zugelassenen Schwenkhebeln werden die in der gutachtlichen Stellungnahme benannten Schwenkhebel mit dem modifizierten Schwenkgriff entsprechend Anlage 6 und Anlage 7 freigegeben. Auf Basis der festgestellten Ergebnisse der Prüfungen und nach Überprüfung der Unterlagen kann davon ausgegangen werden, dass die unterschiedlichen Bauarten keinen negativen Einfluss auf den manuellen Werkzeugangriff haben. / Compared to the tested and approved swinghandles, the swinghandle named in this expert`s report are approved with the modified handle in accordance with attachment 6 and 7. On the basis of the established results of the tests and after checking the documents, it can be assumed that the different types of construction have no negative influence on the manual tool attack.

Mitgeltende Bedingungen/ Applicable conditions

Vorausgesetzt wird die sonstige Baugleichheit der Elemente wie in den o.g. Grundlagen beschrieben./ The identical construction of the elements, as it is described in the above mentioned fundamentals is prerequisite.

Die gutachtliche Stellungnahme hat solange Gültigkeit, wie sich die angegebene Prüfungsgrundlage und/oder das geprüfte Produkt nicht ändern. Sie darf nicht verändert und nur als Ganzes veröffentlicht werden./ The expert`s report is valid as long as the testing-base and/or the tested products are not changed. It is not allowed to modify or partially publish the expert`s report.

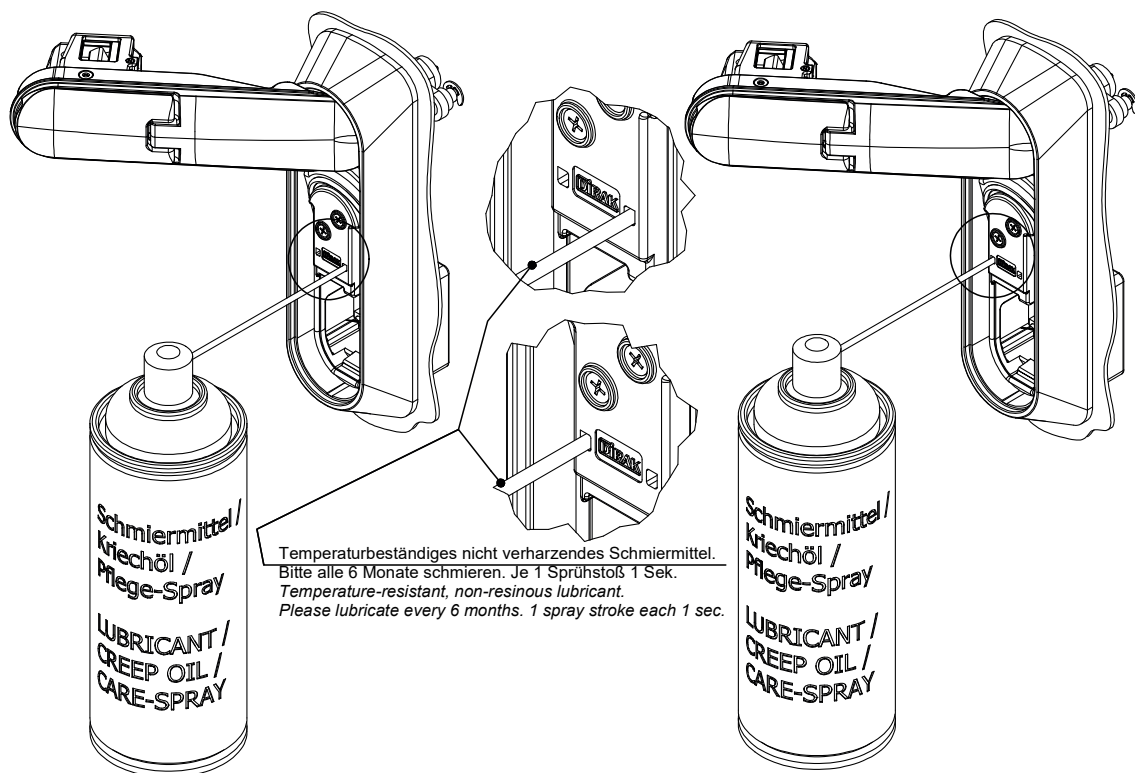
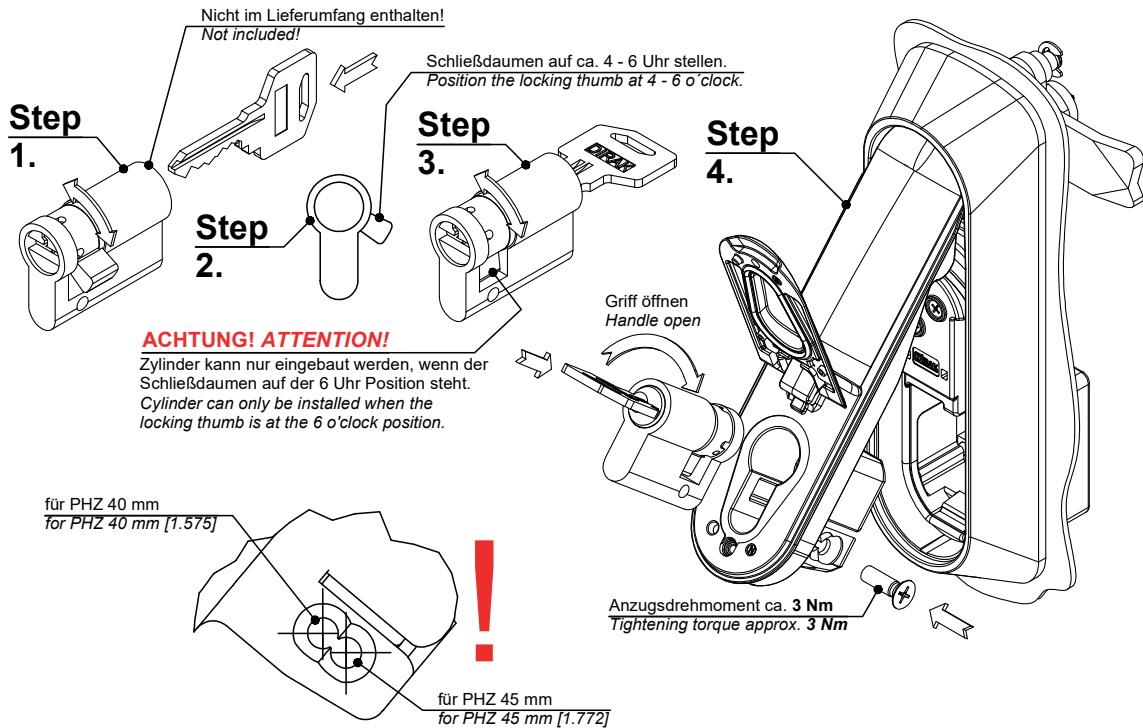
Anlagen/ Attachment

Anlage/ Attachment 1 bis Anlage/ to Attachment 7

D-42551 Velbert, 25. März/ March 2021

EINBAUSITUATION SCHWENKHEBEL 2-103 MIT PHZ UND SCHMIERANWEISUNG

INSTALLATION SITUATION SWING-HANDLE 2-103 WITH PHZ AND LUBRICATION INSTRUCTIONS



EINBAUSITUATION SCHWENKHEBEL 2-103 MIT PHZ UND SCHMIERANWEISUNG

INSTALLATION SITUATION SWING-HANDLE 2-103 WITH PHZ AND LUBRICATION INSTRUCTIONS

Nicht im Lieferumfang enthalten!
Not included!

Schließdaumen kann von 3 - 6 - 9 Uhr eingestellt werden.
Locking thumb can be adjusted from 3 - 6 - 9 o'clock.

Step 1.

Step 2.

Step 3.

Step 4.

ACHTUNG! ATTENTION!
Zylinder kann nur eingebaut werden, wenn der Schließdaumen auf der 6 Uhr Position steht.
Cylinder can only be installed when the locking thumb is at the 6 o'clock position.

für PHZ 40 mm
for PHZ 40 mm [1.575]

für PHZ 45 mm
for PHZ 45 mm [1.772]

Anzugsdrehmoment ca. 3 Nm
Tightening torque approx. 3 Nm

Griff öffnen
Handle open

Schmiermittel /
Kriechöl /
Pflege-Spray
LUBRICANT /
CREEP OIL /
CARE-SPRAY

Schmiermittel /
Kriechöl /
Pflege-Spray
LUBRICANT /
CREEP OIL /
CARE-SPRAY

Schmiermittel /
Kriechöl /
Pflege-Spray
LUBRICANT /
CREEP OIL /
CARE-SPRAY

Temperaturbeständiges nicht verharzendes Schmiermittel.
Bitte alle 6 Monate schmieren. Je 1 Sprühstoß 1 Sek.
Temperature-resistant, non-resinous lubricant.
Please lubricate every 6 months. 1 spray stroke each 1 sec.

Produktnummer / Part Number: 751-0258.00-00000



2-140 Profile-Cylinder DIN 18252



Avantages

- **a)**: clip-in cam 8x45° adjustable. Key removable in closed position only.
- **b)**: spring-loaded clip-in cam. Dust-shutter.
- **c)**: cam has 90° stroke, **not** clip-in. Cam length is 12.2mm. Dust-shutter.
- **d)** clip-in cam. Dust-shutter.
- **e)**: spring-loaded clip-in cam.
- **f)**: cam **not** clip-in, 360° stroke.
- **g)**: radial pin tumbler cylinder, clip-in cam.
- **h)**: insert triangular 8, the first 4mm of the insert are free rotating. Spring-loaded clip-in cam.
- **i)**: Polyamide-plug with and without spring-loaded ball.

Materials

- **a)**: brass, nickel plated
- **b), c), e) f) and g)**: zinc die, chrome plated
conical square e) and f): housing: zinc die, chrome plated, **insert:** steel, chrome plated
- **i) and d)**: PA, black
- **h): housing:** zinc die, chrome plated, **insert:** stainless steel
- **Barrel cylinder:** zinc die
- **Dust-shutter:** stainless steel



Notes

Versions b), c), d) and g) are supplied with 2, Version a) with 3 keys.

Profile-cylinder with pin tumbler cylinder, DIN 18252, 8 x 45° adjustable

	Part Number	Latching type	Clip-in	Delivery Unit
a)	211-9003.00-00000	keyed alike	No	1 pc.
a)	211-9004.00-00000	keyed different	No	1 pc.

Profile-cylinder with key cylinder

	Part Number	Latching type	Closing stroke	Clip-in	Delivery Unit
b)	211-9101.00-00000	keyed different		Yes	1 pc.
b)	211-9102.00-00000	keyed alike DIRAK 1333		Yes	1 pc.
b)	511-9102.00-00000	keyed alike DS200		Yes	1 pc.
c)	211-9301.00-00000	keyed different	90°	No	1 pc.
c)	211-9302.00-00000	keyed alike DIRAK 1333	90°	No	1 pc.
c)	511-9302.00-00000	keyed alike DS200	90°	No	1 pc.

Profile-cylinder PA with key cylinder

	Part Number	Latching type	Clip-in	Delivery Unit
d)	211-9113.00-00000	keyed alike DIRAK 1333	Yes	1 pc.
d)	211-9115.00-00000	keyed different (dual entry)	Yes	1 pc.

Profile-cylinder with insert

	Part Number	Insert	Closing stroke	Clip-in	Delivery Unit
e)	211-9202.00-00000	Square 6mm		Yes	1 pc.
e)	211-9203.00-00000	Square 7mm		Yes	1 pc.
e)	211-9204.00-00000	Square 8mm		Yes	1 pc.
e)	211-9205.00-00000	Square 8mm, slotted		Yes	1 pc.
e)	211-9206.00-00000	Triangular 7mm		Yes	1 pc.
e)	211-9207.00-00000	Triangular 8mm		Yes	1 pc.
e)	211-9208.00-00000	Double bit 3mm pin		Yes	1 pc.
e)	211-9209.00-00000	Double bit 5mm pin		Yes	1 pc.
e)	211-9210.00-00000	Triangular 6.5mm CNOMO		Yes	1 pc.
e)	211-9211.00-00000	Socket hex. 10mm		Yes	1 pc.
e)	211-9212.00-00000	Slotted 2x4mm		Yes	1 pc.
e)	211-9213.00-00000	Daimler Benz type		Yes	1 pc.
e)	211-9214.00-00000	Crown type		Yes	1 pc.
e)	211-9215.00-00000	Square socket 6mm		Yes	1 pc.
e)	211-9216.00-00000	Square socket 7mm		Yes	1 pc.
e)	211-9217.00-00000	Square socket 8mm		Yes	1 pc.
e)	211-9218.00-00000	Slotted recessed coinproof		Yes	1 pc.
e)	211-9219.00-00000	Half-round czech		Yes	1 pc.
e)	211-9220.00-00000	Hex. Belcore 7/16"		Yes	1 pc.
e)	211-9235.00-00000	Conical square 9mm		Yes	1 pc.
f)	211-9203.00-00001	Square 7mm	360°	No	1 pc.
f)	211-9204.00-00001	Square 8mm	360°	No	1 pc.
f)	211-9206.00-00001	Triangular 7mm	360°	No	1 pc.
f)	211-9207.00-00001	Triangular 8mm	360°	No	1 pc.
f)	211-9208.00-00001	Double bit 3mm pin	360°	No	1 pc.
f)	211-9209.00-00001	Double bit 5mm pin	360°	No	1 pc.
f)	211-9212.00-00001	Slotted 2x4mm	360°	No	1 pc.
f)	211-8057.00-00000	Conical square 9mm	360°	No	1 pc.

Profile-cylinder with radial pin tumbler cylinder

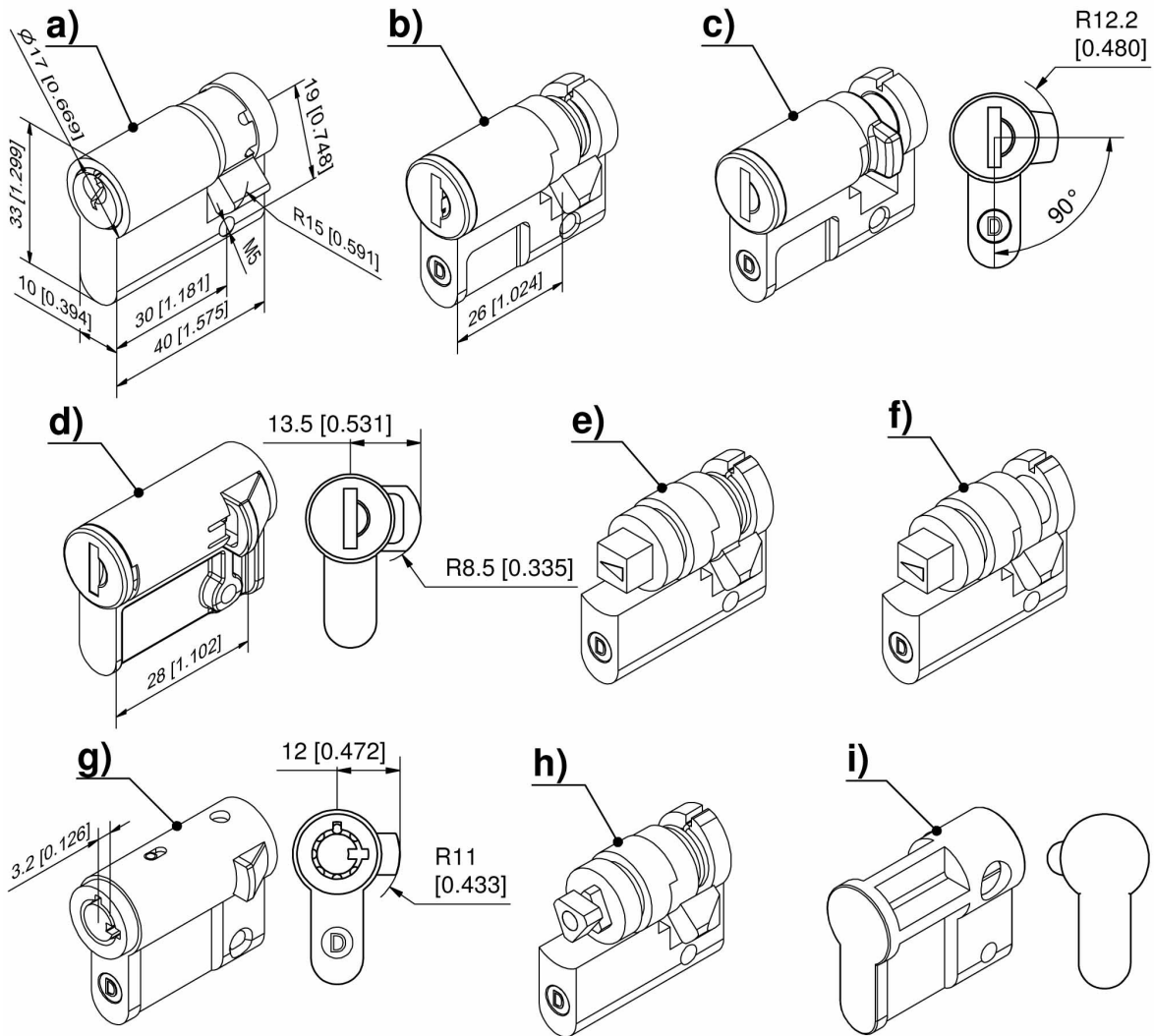
	Part Number	Locking	Latching type	Clip-in	Delivery Unit
g)	211-9106.00-00000	Push button	keyed different	Yes	1 pc.
g)	211-9107.00-00000	Push button	keyed alike DIRAK D0205	Yes	1 pc.

Profile-cylinder with security insert

	Part Number	Insert	Clip-in	Delivery Unit
h)	211-9244.00-00000	Security insert with free rotating 8mm triangular front part	Yes	1 pc.

Profile-cylinder with blind plug

	Part Number	Name	Clip-in	Delivery Unit
i)	211-0401.03-00000	Blind plug without spring-loaded ball	No	1 pc.
i)	211-9201.00-00000	Blind plug with spring-loaded ball	Yes	1 pc.



CLOSING THUMB 8-WAY ADJUSTABLE

211-9003.00-00000
211-9004.00-00000

