



## 3-161 Flat Rod FS



### Avantages

- Flat rods for ramp-shoe 3-162.
- **Version a)** With two square holes 6.2mm.
- Calculation of the rod length: L1 = center of square to center of square.
- **Version b)** With one square hole 6.2mm for self cutting. These flat rods are specially designed to allow for custom length rods.
- Calculation of the rod length: L1 = center of square to end of rod.
- The top of the flat rod can be provided with a square 6.2mm or a round  $\varnothing 7.5$ mm hole as shown in figure.

### Materials

- **Flat rod:** steel, zinc plated

### Notes

Dimension x - see product system 3-162  
Version with rod guides see product system 3-160.  
DIRAK recommends 2 rod guides for rods with length greater than 200mm.

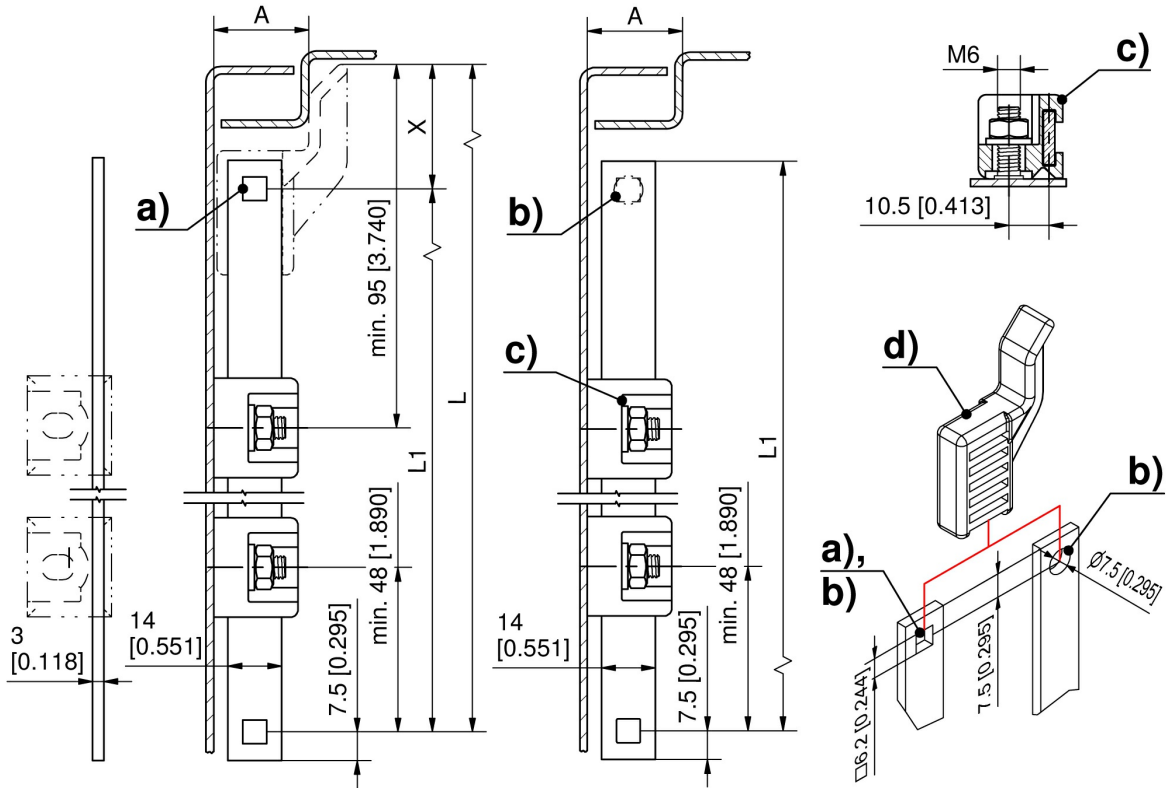


## Flat rods 14 x 3mm

	Part Number	Square hole	L1	Delivery Unit
a)	208-0934.00-Lxxmm	2x 6.2mm		on request
b)	208-0905.15-Lxxmm	1x 6.2mm		on request
b)	208-0905.15-00800	1x 6.2mm	800 mm	1 pc.
b)	208-0905.15-01000	1x 6.2mm	1000 mm	1 pc.
b)	208-0905.15-01200	1x 6.2mm	1200 mm	1 pc.

**\*** Accessories

- c) 3-910 Rod Guide FS 23mm
- c) 3-911 Rod Guide FS 23mm
- d) 3-162 Ramp-Shoe for Flat Rod





## 3-162 Ramp-Shoe for Flat Rod



### Avantages

- The ramp-shoe is pressed on and snaps into the retaining hole at the bottom of the rod.
- Tool-less installation.
- Opening square 6.2mm.
- Alternative bore  $\varnothing 7.5\text{mm}$ .

### Materials

- **Ramp-shoe:** PA, black

### Notes

Please note that the dimension X is to be deducted from the total length of the rod when calculating the rod length.



## Ramp-shoe for flat rods 14 x 3mm

	Part Number	A = bending	Dimension X	Installation type	Delivery Unit
a)	208-2403.03-00018	A18	32.5 mm	tool-less	1 pc.
b)	208-2403.03-00020	A20	32.5 mm	tool-less	1 pc.
c)	208-2403.03-00025	A25	32.5 mm	tool-less	1 pc.
d)	208-2402.03-00023	A23	22 mm	tool-less	1 pc.

