



3-910 Rod Guide FS 23mm



Avantages

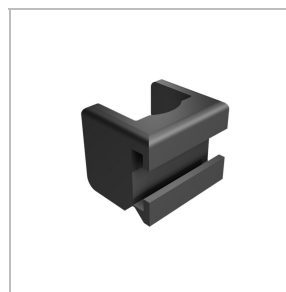
- For flat rods 14x3mm.
- a), b) and c): rod guide with hinge for pre-assembly onto the flat rod.
- b) and c): rod guide for OFFSET-DUO SYSTEM see product system 3-310.
- d) and e): rod guide two halves.

Materials

Rod guide:
a), b) and c): PA, black
d): AISI 316
e): zinc die, black

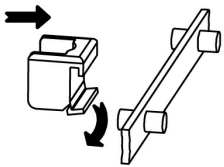
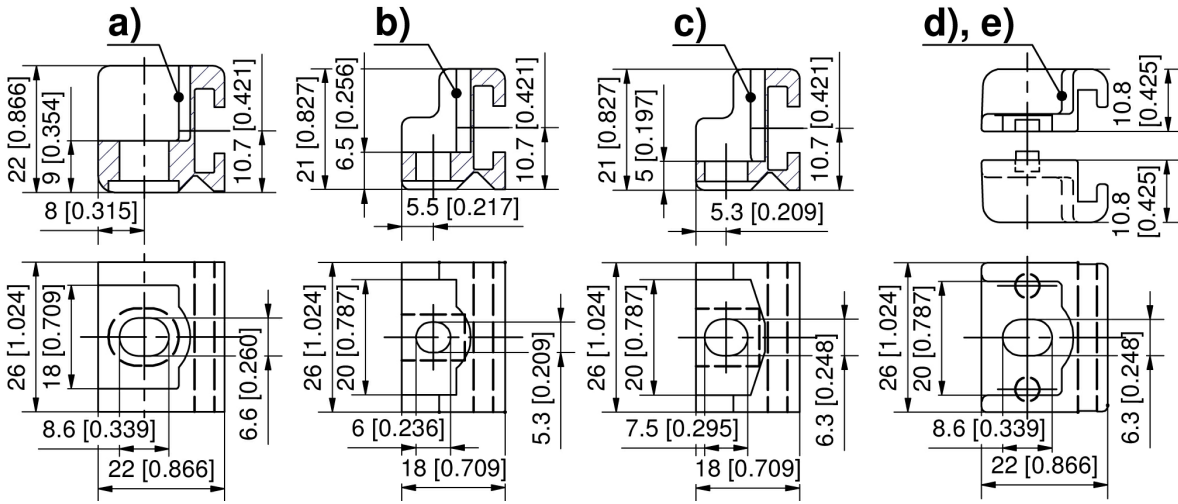
Notes

Required space inside the bend 23mm

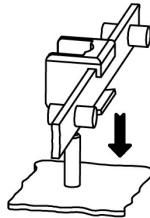


Rod guide

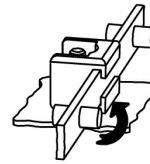
	Part Number	Name	Fastening type	Material	Delivery Unit
a)	208-1501.03-00000	Rod guide PA , 1-part	M6	PA	1 pc.
b)	208-1509.03-00000	Rod guide PA , 1-part	M5	PA	1 pc.
c)	208-1517.03-00000	Rod guide PA , 1-part	M6	PA	1 pc.
d)	208-9790.00-00000	Rod guide stainless steel, 2-parts	M6	stainless steel	1 pc.
e)	208-9791.00-00000	Rod guide zinc die, 2-parts	M6	zinc die	1 pc.



1. Open the rod guide's living hinge downwards and position over the flat rod.



2. Assemble the flat rod guide onto the weld stud.



3. By tightening the nut the living hinge automatically and securely attaches the flat rod..



3-911 Rod Guide FS 23mm



Avantages

- Rod guide for flat rods 14x3mm.
- Quick, tool-less installation.
- Weld-stud M6 x 16-20mm.
- The rod guide has to be placed over the weld stud (1.) and then pressed onto the thread until a click is audible. It is locked now in the final position (2.).
- A visual check through openings is possible from the top.
- The installation and removal of the flat rod is possible with the rod guides fitted already.
- Vibration-proof.

Materials

- **Rod guide:** PA
- **Pull-off forces upon request.**

Notes

- Required space inside the bend 23mm
When using this rod guide for rod latch system 3-170 the weld-stud must be moved inwards by 2mm.
3. installation of the flat rod with assembled rod guide.
 4. wings are flexible.
 5. after locking of the flat rod the flexible wings return to their initial position.



Rod guide

Part Number	Version	Installation type	Delivery Unit
208-1523.54-00000	for flat rod	tool-less	1 pc.

