



7-040 Rod Latch FS PrC Stainless Steel



Avantages

- For cutout C.
- For application within the sealed area.
- The latch can be used with escutcheon, handles or swinghandle.
- Fire protection tested with E60 classification according to DIN EN 45545-3.
- Grounding by grounding clip (optional).
- RH / LH application through double symmetry.

Materials

- **Housing:** AISI 316
- **Rods:** AISI 304

Notes

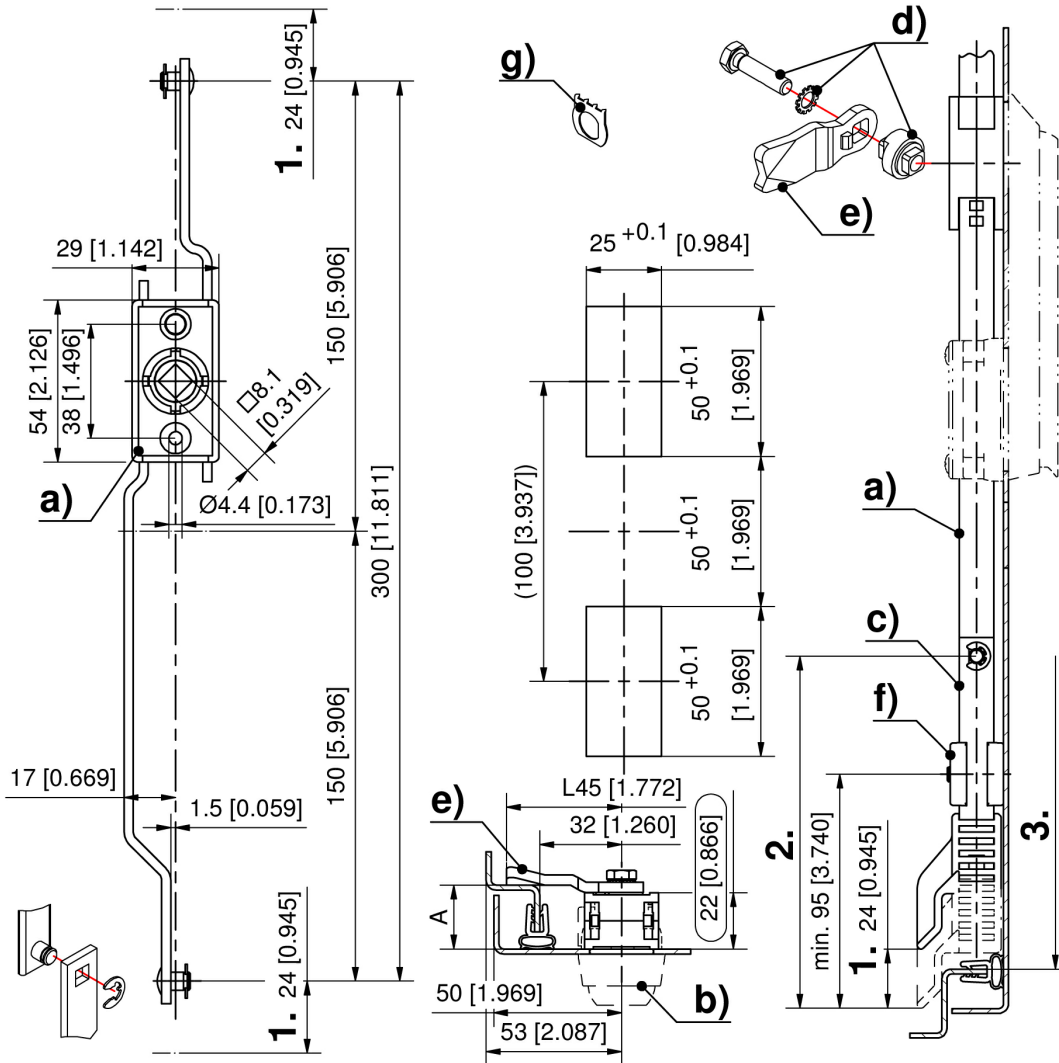
1. stroke 24mm
2. length L
3. clearance



Rod latch

	Part Number	Rod fastening	Installation type	Delivery Unit
a)	208-9024.00-00000	C-clip	screw-on	1 pc.

- b) 7-034 Escutcheon and Inserts PrA / PrC Stainless Steel
- b) 7-060 Swinghandle FS PrC Stainless Steel for PHZ
- b) 7-061 NT Swinghandle FS PrC Stainless Steel for PHZ
- c) 7-070 Flat Rods FS Stainless Steel
- d) 7-041 Cam Adapter Stainless Steel
- e) 7-105 Cams L35/45 Stainless Steel
- f) 208-1501.03-00000 Rod guide PA , 1-part
- f) 208-9790.00-00000 Rod guide stainless steel, 2-parts
- f) 3-911 Rod Guide FS 23mm
- g) 3-011 Grounding Clip Stainless Steel



Formula for flat rods:
cutout in the door center

$$L_2 = \frac{\text{clearance of the cabinet} - 10\text{mm}[0.394] \text{ (tolerance)} - \text{rod latch system } 300\text{mm} [11.811]}{2[0.079]}$$