



7-070 Flat Rods FS Stainless Steel



Avantages

- Flat rods for ramp-shoe 3-162.
- **Version a)** With two square holes 6.2mm.
- Calculation of the rod length: L1 = center of square to center of square.
- **Version b)** With one square hole 6.2mm for self cutting. These flat rods are specially designed to allow for custom length rods.
- Calculation of the rod length: L1 = center of square to end of rod.
- The top of the flat rod can be provided with a square 6.2mm or a round $\varnothing 7.5$ mm hole as shown in figure.

Materials

- **Flat rod:** AISI 304

Notes

1. stroke dimension x - see product system 3-162
- DIRAK recommends 2 rod guides for rods with length greater than 200mm.

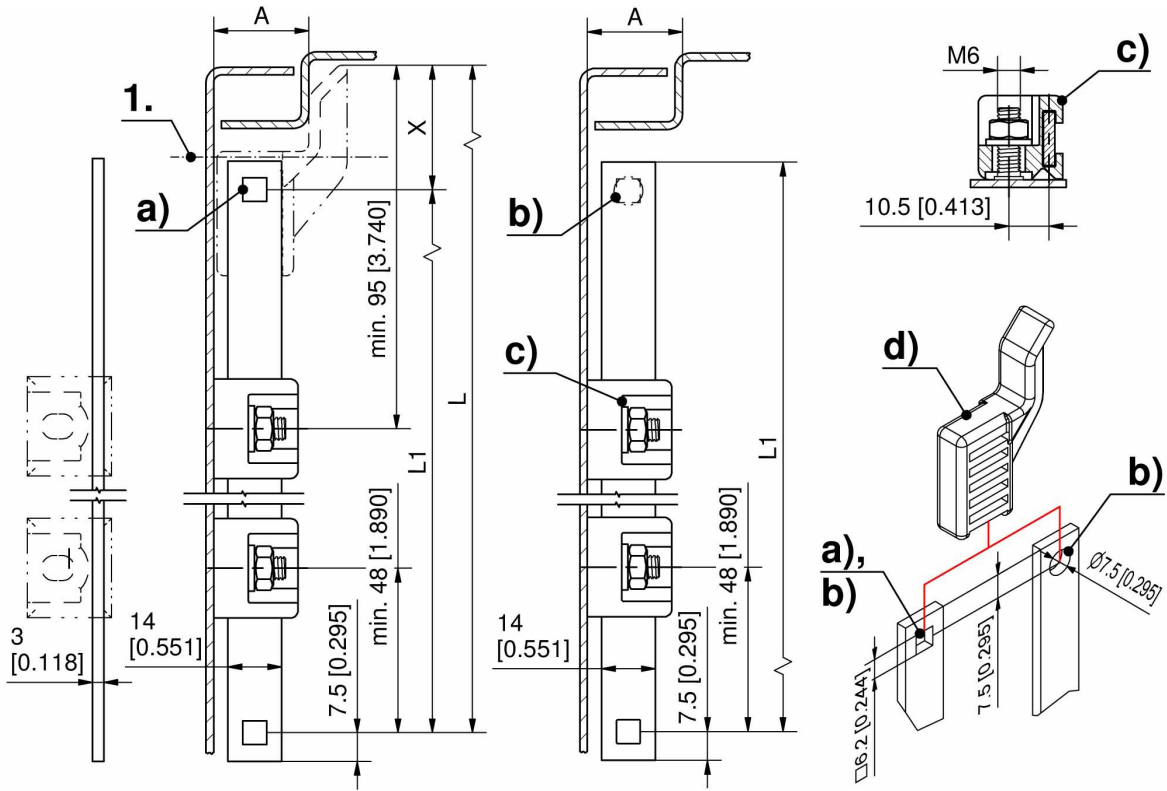


Flat rods 14 x 3mm

	Part Number	Square hole	Length	Delivery Unit
a)	208-0934.04-Lxxmm	2x 6.2mm		on request
b)	208-0905.04-Lxxmm	1x 6.2mm		on request
b)	208-0905.04-01000	1x 6.2mm	1000 mm	1 pc.

***** Accessories

- c) 3-910 **Rod Guide FS 23mm**
- c) 3-911 **Rod Guide FS 23mm**
- d) 3-162 **Ramp-Shoe for Flat Rod**





3-162 Ramp-Shoe for Flat Rod



Avantages

- The ramp-shoe is pressed on and snaps into the retaining hole at the bottom of the rod.
- Tool-less installation.
- Opening square 6.2mm.
- Alternative bore \varnothing 7.5mm.

Materials

- **Ramp-shoe:** PA, black

Notes

Please note that the dimension X is to be deducted from the total length of the rod when calculating the rod length.



Ramp-shoe for flat rods 14 x 3mm

	Part Number	A = bending	Dimension X	Installation type	Delivery Unit
a)	208-2403.03-00018	A18	32.5 mm	tool-less	1 pc.
b)	208-2403.03-00020	A20	32.5 mm	tool-less	1 pc.
c)	208-2403.03-00025	A25	32.5 mm	tool-less	1 pc.
d)	208-2402.03-00023	A23	22 mm	tool-less	1 pc.

